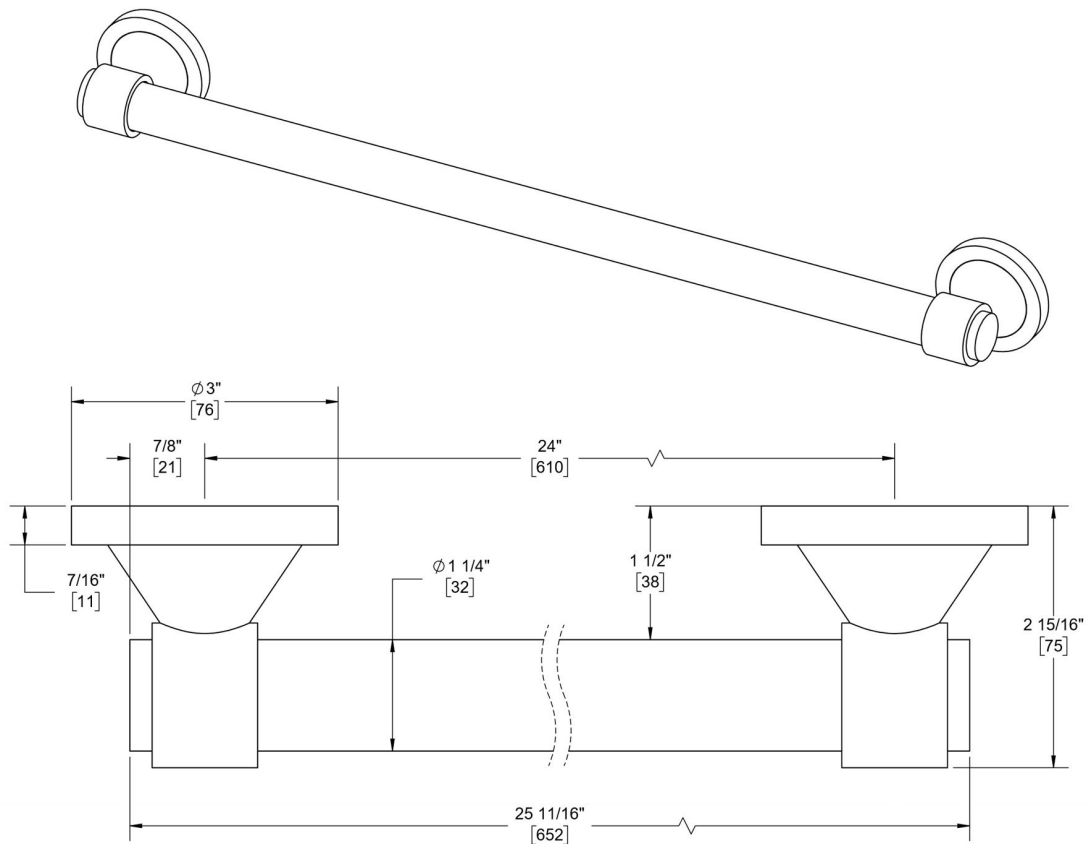


CONCERTO

24" GRAB BAR

Product Code: EVO24CON

portals
luxury hardware & accessories



MATERIALS

Solid & tubular brass components, stainless steel fasteners

FUNCTION DETAILS & PRODUCT NOTES

- Product design coordinates with other shower & bathroom hardware in the Concerto suite.
- Concealed mounting screws preserve decorative look.
- Can be installed horizontally, vertically, or at any angle.
- ADA compliant when properly installed into wall studs.

CARE & MAINTENANCE

Portals products should be cleaned with water and dried with a soft cloth. Use of harsh or abrasive chemicals may harm finish and will void the warranty.

WARRANTY

Lifetime warranty for residential use covers defects in material and workmanship of this product.

CONCERTO

24" GRAB BAR

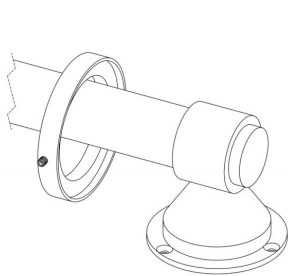
Product Code: EVO24CON

portals
luxury hardware & accessories

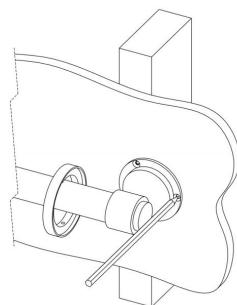
INSTALLATION INSTRUCTIONS

Before starting, assess the installation area to locate studs, framing, and any potential obstructions to be avoided within the wall (e.g., wires, pipes, ducts, etc).

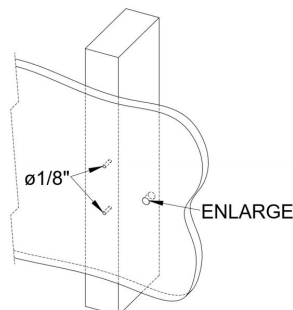
1. Loosen set screws to free the cover plates, and then carefully guide them around the posts onto the grab bar. Wrapping the bar in protective material reduces likelihood of finish damage.
2. Place grab bar against the wall in desired position and mark each mounting plate hole. At least two screws per post should enter a stud or framing.
3. Drill $\varnothing 1/8"$ pilot holes at the marked locations. Enlarge holes entering hollow wall according to preferred anchor type.
4. Apply silicone caulk to holes and back of each mounting plate to guard against water penetration. Insert appropriate anchors into holes where needed and then fasten grab bar to wall with wood screws using a #2 Phillips screwdriver.
5. Guide cover plates back over posts and reposition against wall with set screws facing down. Tighten set screws to secure cover plates.



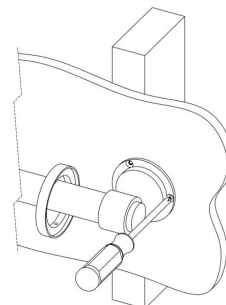
Loosen set screws & guide covers onto bar



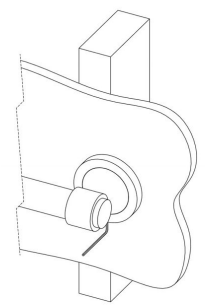
Mark screw locations



Drill pilot holes



Fasten to wall



Reposition & secure covers